

# **Solutions for tape yarn production**

## **EvoTape and WinTape**





**Boost operations with extreme productivity and minimum space requirements. And create room for new ideas.**

**Achieve superlative efficiency with the lowest energy consumption, raw materials usage and staff requirements. And create capacities for new projects.**

**Ensure your production is sustainable, efficient and future-oriented. And make your systems profitable - for many years to come!**

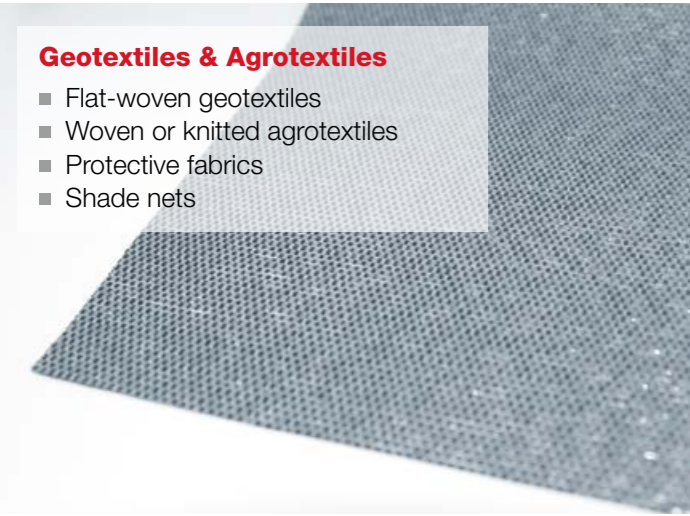




# Applications

## Geotextiles & Agrotextiles

- Flat-woven geotextiles
- Woven or knitted agrotextiles
- Protective fabrics
- Shade nets



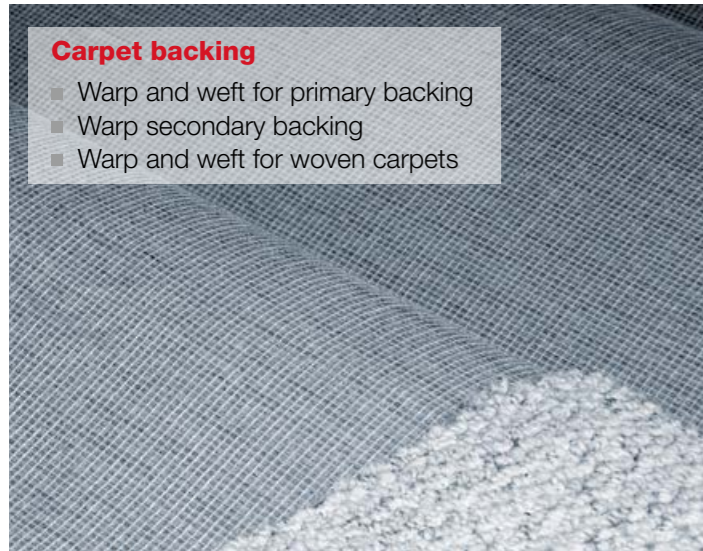
## Artificial grass

- Fibrillated tape
- Primary and secondary backing
- Woven carpet yarns



## Carpet backing

- Warp and weft for primary backing
- Warp secondary backing
- Warp and weft for woven carpets



## Ropes



## Baler twines

- Twisted tapes as tubeless bobbins



## Further applications

- Sewing yarns made of fibrillated and twisted tapes
- Tarpaulins
- Cable fillers
- Jute replacement, such as coffee bags



# EvoTape

## The (r)evolution of tape production

### Features

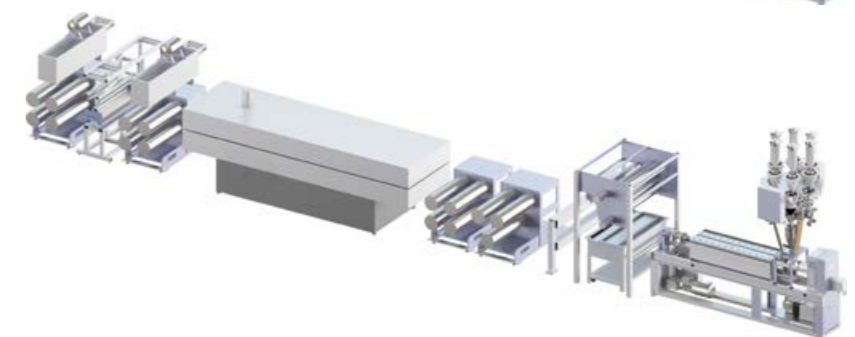
- Up to 1,000 kg/h output
- Up to 800 m/min. production speed
- Adiabatic, high-speed extruder
- Best temperature distribution in hot air oven and on entire godet surfaces
- Re-feeding of tape waste
- Film quenching by water bath or chill roll
- Thickness monitoring systems, also in conjunction with automatic T-die
- Very effective film drying for high speeds
- Online assistance
- Low degradation of raw materials due to low melt temperatures
- Extremely-low energy consumption

### Configurations

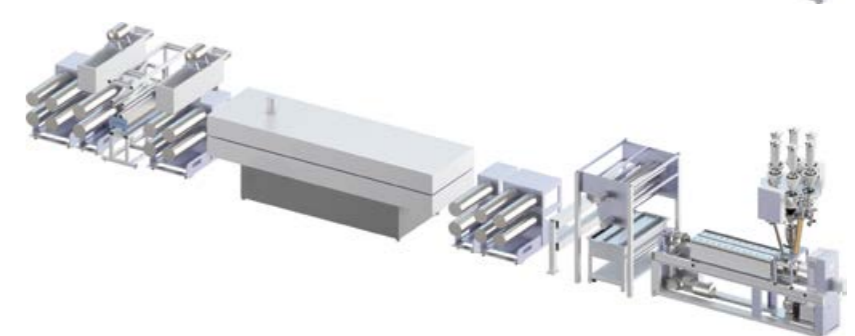
for primary carpet backing



for geotextiles



for baler twines



### Technical data

#### Extruder variants

90 mm Ø 27D  
105 mm Ø 27D  
120 mm Ø 33D

#### Working widths

800 mm  
1,000 mm  
1,400 mm  
1,600 mm





# WinTape

## Automatic precision winder

### Features and variants

- Well-proven camshaft traversing
- Yarn tension control via dancer arm
- With electronic gear (2 motors per winder) for perfect bobbins
- Inverter controlled motors for lowest electrical energy consumption
- With magazine for 4 empty tubes
- With parking position for 2 full bobbins for reduced operator attention
- Automatic adjustment of yarn-tail length
- Central setting of yarn tension and bale roller pressure
- Fixation of yarn ends for 2- and 4-ply winding

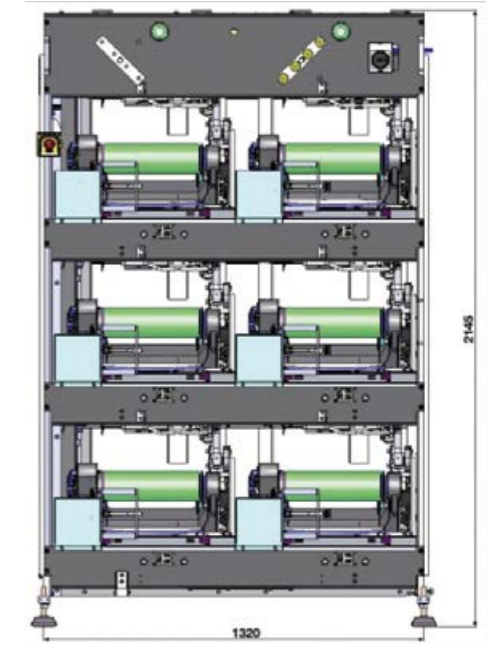
### Operators aid

For a 4 levels high frame a moveable platform is required for threading-up the winders and for removing the full bobbins, this can be combined with a transport belt for the finished bobbins.

### Waste recycling

During bobbin change the tape is aspirated for a short moment. This waste can be recycled in the line without any operator touching this waste. Start-up waste can be recycled with this system too without using a recycling extruder = strongly reduced electrical power consumption for recycling!

### Frame versions



3 levels high (4 levels: 2715 mm high)

EvoTape and WinTape is the perfect couple for innovative tape production. The automatic winding solution WinTape convinces with

- Fully-automatic doffing
- Two-end winding for warp yarn
- Metered bobbins reducing waste in warp beaming
- Reduced staff
- Hard paper or aluminum tubes
- Very stable bobbins without overthrown tapes or off-slipping tapes for higher beaming efficiency

### Technical data

Denier range	Winding speed	Tube length	Traverse stroke	Tube inside diameter	Package diameter
2 or 4 x 270 dtex to 1 x 3,000 dtex (up to 4,500 dtex on request)	up to 800 m/min	330 mm	300 mm	90 mm 3 1/4" (82.55 mm)	320 mm

**STC Spinnzwirn GmbH**

Zwickauer Straße 247

09116 Chemnitz

GERMANY

Phone +49 371 23 88/240

Fax +49 371 85 21 42

[www.stc-spinnzwirn.com](http://www.stc-spinnzwirn.com)

[info@stc-spinnzwirn.com](mailto:info@stc-spinnzwirn.com)

The information supplied in this brochure is for guidance only. We reserve the right to modify it at any time.

Reprint only with expressed permission of STC Spinnzwirn